

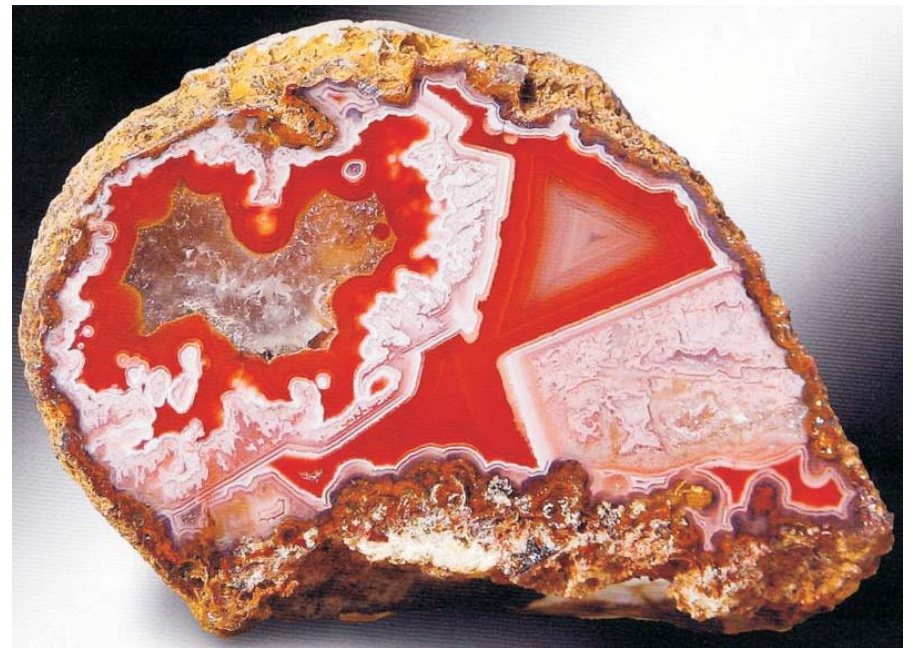
NON-PROFIT ORG.
U.S. POSTAGE
PAID
FALLBROOK, CA
PERMIT NO. 560

Lithosphere
Fallbrook Gem and Mineral Society
Patricia Hartman Editor
123 W. Alvarado St. Suite B
Fallbrook, CA 92028
RETURN SERVICE REQUESTED

Lithosphere

Volume XVI, Number 2

Fallbrook, California



Pseudomorphic Coyamito Agate

Fallbrook Gem and Mineral Society, Inc.

February

2008



Fallbrook Gem and Mineral Society, Inc.
123 W. Alvarado Street Suite B, Fallbrook, CA 92028
 760-728-1130 www.fgms.org Email: fgms@sbcglobal.net

President	Gina Palculich	(760) 728-2196
Vice President	Mary Fong/Walker	(760) 723-3484
Secretary/Office	Liz Yamaguchi	(760) 728-7233
Treasurer/Director of Finance	Vanessa Jones	(760) 728-2339
Director of Facilities	Erich Kern	(951) 698-7950
Director of New Facilities	Don Parsley	(951) 600-4890
Director of Public Programs	Bill Hollingsworth	(760) 726-5878
Director of Education	Elizabeth Cheatham	(760) 731-0436
Director of Member Services	Janice Bricker	(760)-728-1333

FGMS Museum

Museum Curator	Garth Bricker	(760) 728-1333
Assistant Curator	Mike Evans	(760)-414-9722
Gift Shop	Elizabeth Cheatham	(760) 731-0436

Lithosphere Editor and Webmaster

Patricia Hartman 760-723-6624

Calif. Federation Representative

John Frey 951-677-4043

Fund Raising

Board of Directors

Volunteers for Minerals Representative

Garth Bricker (760) 728-1333

Membership/Refreshments

Janice Bricker 760-728-1333

Publicity

Diane Tjepkes 760-723-1086

Programs

Mike Evans 760-414-9722

Scholarship

Elizabeth Cheatham 760 731-0436

Field Trips

Matt Boeck 760-216-8971

Historian

To be determined

Inside the Lithosphere

March Program	3
Board Summaries	4
Field Trip	5
In Memory	6
Budget	11
Garth's World	8
Announcements	10
Calendar	13
By-Laws	15
Legal Information	19

Contact the editor Patricia Hartman for more information at 760-723-6624 or email to gems@hitekdesigns.com. Or write to the editor at PO Box 1390, Bonsall, CA 92003.

Legal Information

The Fallbrook Gem and Mineral Society is a §501(c)(3), non-profit, educational and recreational organization dedicated to promote the study of mineralogy and allied earth sciences; to study and practice the art of lapidary; and to promote good fellowship.

Regular meetings are held at 7:00 pm on the second Thursday of each month, except February (generally the third Thursday) and July and August (no meetings), at 123 W. Alvarado St. The public is invited to attend our museum located at 123 W. Alvarado. The museum is open Thurs., Fri., and Sat. 11am to 3pm and during special events in the downtown area or by appointment. Annual dues are \$25 for adults, \$20 for each additional adult in the same household; \$6 per child to age 17. The initiation fee is \$6 per person. Membership fees must be submitted along with an application, obtainable from the Society or its web site.

Copyright © 2003 by the Fallbrook Gem and Mineral Society, Inc. Except for items that are specifically copyrighted by their authors, other societies may use material published in Lithosphere provided proper credit is given and the sense or meaning of the material is not changed.

Lithosphere is published monthly (except July and August) and is sent to all members of the Fallbrook Gem and Mineral Society as part of their membership.

Exchanges: Free reciprocal exchanges for the bulletins of other gem and mineral societies are welcomed. Please send all exchange bulletins to the FGMS Office.

Disclaimer: The opinions and conclusions expressed in Lithosphere are those of the authors and do not necessarily represent those of the Officers, Editor, or members of the Society.

Contributions: Submissions (articles, letters, notes, announcements, photographs, etc.) are actively solicited from FGMS members. Submissions from non-members may be included at the discretion of the Editor. Copyrighted material submitted for publication must be accompanied with a written release from the copyright holder. Original, personally-written articles will be published with a copyright notice in the author's name if requested; otherwise all submissions will be published without individual copyright. No anonymous submissions will be considered; however, the submitter's name may be withheld, or a pseudonym used, upon request. All material is subject to editing. Unless previously arranged, all submissions become the property of the Fallbrook Gem and Mineral Society. Send all submissions to the Editors.

Deadline: The deadline for all submitted material is the 20th of the month prior to publication. Allow extra time if line drawings or photographs are submitted. Editor: Patricia Hartman, PO Box 1390, Bonsall, CA 92003. Email address: patricia@hitekdesigns.com

Lithosphere Staff: Garth Bricker. Website: <http://www.fgms.org/>—Webmaster Patricia Hartman: Webmaster@fgms.org

Affiliations: California Federation of Mineralogical Societies and the American Federation of Mineralogical Societies.

Display Advertising rates for the *Lithosphere* a publication of the Fallbrook Gem and Mineral Society:

Full page, 7"x4.5" = \$120.00 for 10 months, or \$14.00 per issue.
 Half-page, horizontal 3.5"x4.5" = \$60.00 for 10 months, or \$7.00 per issue
 Half-page, vertical 2.25"x7" = \$60 for 10 months, or \$7.00 per issue.
 Quarter-page horizontal 3.5"x2.25" = \$30 for 10 months, or \$3.50 per issue.
 Eighth-page horizontal 1.25"x4.5" = \$15 for 10 months, or \$1.75 per issue.
 All display advertising must be paid for in advance. All

advertising in the *Lithosphere* must be related to the educational focus of the Fallbrook Gem and Mineral Society and its publication the *Lithosphere*.

Deadline for all advertising is the 15th of the month preceding the month of publication. The *Lithosphere* publishes monthly during the 10 month period between September and June. Classified advertising is free and

is limited to text only. Classified ads will be placed on the classified ad page and run until notification is received from advertiser to cancel ad, or at the editor's discretion based on space available. Editor reserves the right to edit all classified ads to fit the space available. Cover photo from 2007 Calendar of Fine Agates & Jaspers. Guest photo from palagem.com.

Section 3. The Board of Directors shall conduct the business of the Society, shall have general management and control of all property belonging to the Society, and shall possess such powers and perform such duties as the Society shall prescribe.

Section 4. The Board of Directors shall transact all necessary business between regular meetings and any business referred to it by the Society. The Board of Directors shall create such Committees as are deemed necessary to carry on the work of the Society. The Board of Directors is subject to orders of the Society. None of its acts shall conflict with any action taken by the Society.

Section 5. The Board of Directors shall meet at least four (4) times per year. Special meetings may be called by the President and must be called upon the request of three (3) or more members of the Board.

Section 6. Four (4) voting members of the Board of Directors shall constitute a quorum.

ARTICLE X: MEETINGS

Section 1. A Regular Meeting time and place shall be determined by a majority vote of the members of the Society.

Section 2. Special meetings may be called by the order of the Board of Directors.

Section 3. The Annual Meeting shall be the regular meeting for the month of December. Required business for the Annual Meeting shall include:

- a. The presentation of all annual reports required in these bylaws.
- b. The election of officers for the following year.

Section 4. A quorum shall consist of the voting members present at any properly scheduled meeting of the Society.

ARTICLE XI: BUSINESS

Section 1. The business conducted at all regular meetings shall include, not necessarily in this order:

- a. Call to order
- b. Reports of Committees
- c. Announcements
- d. Unfinished business
- e. New business
- f. Program or open forum
- g. Adjournment

Section 2. All commercial activity shall be conducted only after adjournment of the business meeting and program.

Section 3. All commercial activity shall be conducted under rules established by the Board of Directors.

Section 4. Where business procedure is not covered by these bylaws, Robert's Rules of Order shall prevail.

ARTICLE XII: DISSOLUTION

Section 1. In the event of dissolution of the Society, its assets shall be turned over to the State of California for educational purposes and/or to one or more non-profit organizations or corporations that have educational and/or scientific purposes similar to those of the Society. The selection of the specific organizations to receive the Society's assets shall be determined by the Society's Board of Directors.

ARTICLE XIII: AMENDMENTS TO BYLAWS

Section 1. These bylaws may be amended by a two-thirds (2/3) affirmative vote of all voting members present at any regular meeting of the Society, provided that notice of such vote has been given at the previous regular meeting.

Section 2. These bylaws may be amended by a two-thirds (2/3) affirmative vote of the Society's Board of Directors at any properly scheduled meeting of the Board of Directors. Notice of amendments made by the Board of Directors shall be promptly provided, in writing, to all members of the Society. The voting members of the Society may nullify any amendment made by the Board of Directors by a simple majority vote at any of the next three (3) regular meetings of the Society following the written notice.

FGMS MARCH 13TH AT 7:00PM

The Oceanview Mine

by Jason Stephenson



Jason Stephenson in his new environment on the Pala grounds.
Photo:(Wimon Manorotkul)

Jason Stephenson joined the Pala team in October of 2006. His path in the gem and mineral world began with a Bachelors of Science degree in Geology from the University of Idaho in 1999. He then earned his Graduate Gemology degree from the Gemological Institute of America in 2000 and quickly became involved in the gem trade.

Jason has worked on the wholesale and retail side of the business, and has been involved with the buying and selling of jewelry, gemstones, and mineral specimens.

At Pala, along with sales, Jason has been contributing to the growth of information on Palagems.com, by researching and writing about the ever

changing landscape of gem materials. A full biography of Jason can be read

Jason's curiosity in rocks and minerals expanded when he moved to Idaho at the age of 14. The "gem state" quickly began to entice his exploratory nature. Mountaineering and gem collecting started Jason's thinking about geological formations and the treasures held within. It was an obvious transition to study geology at the University of Idaho. Jason enrolled in the fall of 1995 and started in on the curriculum with emphasis on mining and mineralogy. His classroom work was supplemented by a lot of field work, which took him all over the northwest. Building his mineral collection along the way Jason found garnets, fluorite, smoky quartz, malachite, opal, geodes, and a variety of agates including moss and plume.

In the three and a half years at the University, Jason paid his way through by playing varsity golf for the Idaho Vandals. During his junior year Jason took a break from golf and decided to do an exchange program in Europe. To stay on course and diversify his geological skills Jason moved to northern Sweden where he was versed in the intricacies of heavy metal mining at Luleå University. Then he traveled south to the University of Reading, in England, where he focused more on sedimentary geology and costal processes. During one of his field trips he was able to collect some fine bivalve and gastropod fossils.

After college Jason began to search for careers related to gemstones, he then found out about the Gemological Institute of America and enrolled in the fall of 2000. While studying at the GIA Jason gained some practical skills by working retail at Gems of La Costa after school. He also met

Edward Boehm and with him began some side projects related to the wholesale side of the market. Jason continued to work for both establishments after he completed the Graduate Gemology degree. With a desire to dive into all aspects of the gem and jewelry business Jason moved to Los Angeles and began work with a colored stone dealer/jewelry manufacturer. While at this company Jason was involved with buying and selling cut and rough gemstones. Traveling all over the country working and managing trade shows Jason honed his skills in customer relations and jewelry design. Beyond that Jason traveled aboard cruise ships where he arranged jewelry trunk shows and lectures on gemstones of the world. His work aboard Crystal Cruises took him through Asia, South America, the Caribbean Sea, Southern Africa, and the Mediterranean Sea. [back to top]

The refreshments for this month will be donated by Chris Toft and Fuen Lopez.

SUMMARY OF THE FEBRUARY 2, 2008 FGMS BOARD MEETING

Treasurer Vanessa Jones presented 2007's final financial statement, reflecting total income of \$98,536.00, total expenses of \$75,718.57, and a profit of \$22,817.43. The largest single income item was museum/gift shop sales, \$14,143.00 and the largest single expense item was legal expenses, \$8,637.00, due to the threat of

litigation. A proposed budget for 2008 was approved by the Board. It projects income of \$80,150.00, with expenses projected at \$79,615.00. The January 2008 Profit & Loss statement showed a loss of \$617.68, due to the annual payment of FGMS's group insurance premium of \$1,110.00. The Treasurer informed the Board that the 2007-08 TOT allocation has an unused balance of \$977.44 that could possibly be used for display cases for the San Diego County Fair booth.

Reviewing FGMS's current available cash resources and FGMS's mortgage, a discussion was held as how best to allocate funds. The Board unanimously approved to pay down the mortgage by \$50,000. The current mortgage scheduled to be renegotiated on March 1st.

Capital Campaign I, Phase II has now been closed and President Gina Palculich informed the Board that it started in March 2002 with the specific purpose of paying down the mortgage. It had 5 contribution levels (\$10,000, \$5,000, \$2,500, \$1,000 and \$100 down) and raised a total of \$60,000. One donor, Liz Yamaguchi's late sister, Jane Peters, contributed over \$20,000 prior to her death. The Board unanimously approved to recognize Jane Peters by adding a category to be named "Benefactor" and approved funding for the purchase of a plaque to recognize all the donors of this campaign.

FGMS Attorney, John Crawford, was invited to attend the meeting to address the "threat of litigation". He stated that no lawsuit has been filed against FGMS, however, no letter has been received from Attorney Victor Rameriz (representing David La Marr, Cal Graeber, Pete Bancroft and Anne Ondraka) rescinding

- c. Failure to attend regular meetings of the Society and/or the Board of Directors.
- d. Three-fourths (3/4) vote of the general membership at a regular meeting.
- e. Expulsion from the Society.

Section 9. Vacancies in elected offices shall be filled in the following manner:

- a. If the Office of President is vacated, the Vice-President shall assume the Office of President for the remainder of the term and shall vacate the Office of Vice-President.
- b. If an elected office other than President is vacated, the Board of Directors shall elect a regular or honorary member to fill the office for the remainder of the term.

Section 10. If the President is temporarily incapacitated or temporarily unable to serve, the Vice-President shall assume the Office of President in an acting capacity until the President can return to service or for the remainder of the term, whichever occurs first. If any elected officer other than President is temporarily incapacitated or temporarily unable to serve, the Board of Directors shall appoint a regular or honorary member to act in that capacity until the elected officer can return to service or for the remainder of the term, whichever occurs first.

ARTICLE VIII: COMMITTEES AND APPOINTED POSITIONS

Section 1. The Board of Directors of the Society shall have the power to establish committees and to appoint regular and honorary members to positions of responsibility in the Society.

Section 2. Committees and appointed positions shall include, but are not limited to:

- a. **Membership:** The Membership Committee shall solicit and accept applications for membership in the Society and shall ensure that membership applications are acted upon promptly. The Membership Committee shall issue membership cards to all members of the Society.
- b. **Program:** The Program Committee shall arrange for a speaker or other activity to be held in conjunction with the Society's regular meetings. The Program Committee shall ensure, to the greatest extent possible, that all members of the Society are reasonably well informed of scheduled programs in advance of the meetings.
- c. **Education:** The Education Committee shall organize, publicize, and supervise educational activities for the benefit of the members of the Society. Additionally, the Education Committee shall

organize, publicize, and supervise educational activities for members of the community.

- d. **Field Trip:** The Field Trip Committee shall organize, publicize, and supervise field trips for the benefit of the members of the Society.
- e. **Federation Director:** The Federation Director is the liaison between the Society and the California Federation of Mineralogical Societies (CFMS). The Federation Director shall publicize the activities of the CFMS at the Society's meetings and in its publications. If the Society declines to participate in the activities of the CFMS, the position of Federation Director may be abolished.
- f. **Museum Curator:** The Museum Curator is responsible for the overall management of the Society's museum and for the maintenance and security of the Society's collection. The Museum Curator shall have the authority to assemble a staff of advisors and associate curators in order to carry out his/her responsibilities.
- g. **Editor:** The Editor is responsible for publishing the Society's bulletin. The Editor shall publish general information about the activities of the Society, news of the California Federation of Mineralogical Societies, the American Federation of Mineralogical Societies, and any other societies or activities which further the purpose and policies of the Society.
- h. **Historian:** The Historian shall keep a record of exhibitions, field trips, and all other historical data pertaining to the Society.

Section 3. Additional committees may be created and appointments to other positions may be made by the Board of Directors.

Section 4. There is no restriction against any person serving in more than one committee or appointed position concurrently. Elected officers may also serve in appointed positions.

Section 5. All committee chairpersons shall render a written report to the Society at the Society's Annual Meeting.

Section 6. All persons in appointed positions serve at the discretion of the Board of Directors and may be removed by the Board, at any time, with or without cause.

ARTICLE IX: BOARD OF DIRECTORS

Section 1. The voting members of the Board of Directors shall consist of the ~~seven (7)~~ elected officers of the Society.
 ~~nine (9)~~

Section 2. The non-voting members of the Board of Directors shall consist of the Chairpersons of all Committees and other appointed positions.

taken. The refusal of the member to appear before the Board of Directors shall not stop the expulsion process.

ARTICLE V: DUES

Section 1. The Board of Directors shall set the dues and initiation fees of the Society.

Section 2. Dues are due by the first regular meeting of the calendar year. To remain in good standing, a member must pay his/her dues before March 1.

Section 3. Members who have not paid by March 1 will be automatically dropped from membership. Delinquent members may be restricted from participating in certain Society activities as determined by the Board of Directors. Delinquent members may be reinstated after payment of dues.

Section 4. The Board of Directors shall have the right to establish pro-rated dues for partial-year memberships and shall have the right to define and establish group rates, such as a family rate, for the payment of dues to the Society.

Section 5. Dues will be refunded on a pro-rated basis to any individual who is expelled from the Society.

ARTICLE VI: OFFICERS AND THEIR DUTIES

Section 1. The officers of the Society shall be: President, Vice-President, Secretary, Treasurer, and ~~three (3)~~ ^{five (5)} Directors.

Section 2. The President shall preside at all the meetings of the Society and of the Board of Directors; shall be an ex-officio member of all committees, except the Nominating Committee; and, with ratification of the Board of Directors, shall appoint the Chairpersons of Standing Committees.

Section 3. The Vice-President shall assist the President. In the absence of the President, the Vice-President shall perform the duties of the President.

Section 4. The Secretary shall keep an accurate record of proceedings of the Society and of the Board of Directors and shall answer routine correspondence.

Section 5. The Treasurer shall receive all dues and other funds and shall deposit them in the Society's account. The Treasurer shall make disbursements when authorized by the Board of Directors. All checks in excess of \$500 must be signed by the Treasurer or Secretary and be countersigned by the President or Vice-President. The Treasurer shall keep a full and accurate account of all transactions and shall render a report at every meeting of the Board of Directors. Additionally, the Treasurer shall prepare a written profit and loss report that will be presented to the Society at its Annual

Meeting. The Treasurer shall be responsible for the preparation and filing of all tax forms, and shall ensure that the Society adheres to the tax regulations defined for 501(c)(3) non-profit organizations.

Section 6. The Directors shall assume duties assigned by the President.

ARTICLE VII: ELECTIONS AND TERMS OF OFFICE

Section 1. Nomination of officers shall be made by a Nominating Committee of three (3) persons selected in the following manner:

- a. The Board of Directors shall select one member before October 1.
- b. The voting members of the Society shall select two members at the October regular meeting.
- c. The members of the Nominating Committee shall select one of their number to serve as Chairperson of the Committee.

Section 2. From the rolls of regular and honorary members, the Nominating Committee shall select at least one, but not more than two, candidates for each office and submit their names to the Secretary of the Society. The Committee shall obtain the consent of the candidates before submitting their names. The Secretary shall provide a list of the candidates to all members at least five days before the November regular meeting.

Section 3. The Nominating Committee shall present its list of candidates at the November regular meeting at which time further nominations may be made from the floor.

Section 4. Elections will be by secret ballot at the December meeting. Ballots may be eliminated for all offices for which there is only one candidate.

Section 5. Newly elected officers shall assume office at the January meeting of the Board of Directors or the January regular meeting, whichever occurs first.

Section 6. No member shall serve in more than one elected office concurrently.

Section 7. The President, Vice-President, Secretary, and Treasurer shall each serve for a term of one (1) year. Each Director shall serve for a term of two (2) years. Two (2) Directors shall be elected in each even-numbered year. One (1) Director shall be elected in each odd-numbered year.

Section 8. An elected officer of the Society may be removed from office for one or more of the following reasons:

- a. Voluntary resignation.
- b. Non-payment of dues.

the threat. Regarding the complaint filed by Attorney Ramirez with the California Attorney General, Attorney Crawford said that no response has been received from the AG's office. (Note: Attorney Crawford previously submitted a response to the Attorney General's inquiry regarding this complaint.)

Attorney John Crawford also engaged in a question and answer session with the assembled Board members on the status, structure and content of the current FGMS bylaws.

Director of Facilities, Erich Kern, submitted a report on all building facility efforts completed in January. Bill Hollingsworth volunteered to have the weeds on the vacant lot mowed.

Director of Education, Elizabeth Cheatham, submitted a 2007 year-end educational report. She reported on the current status of museum/gift shop volunteers for 2008.

Director of Development, Don Parsley, reported on the FGMS/FCDC meeting of February 1st, stating that they are working on a plan and schedule for a small building for a visitor's center and public restrooms.

Janice Bricker announced that FGMS will hold its spring rummage sale on Saturday, March 29th in the Meeting Room.

Director of Member Services, Janice Bricker, submitted a 2007 year-end membership report. Gina Palculich announced that a field trip to the Bowers Museum in Santa Ana is planned for Saturday, March 15th. Matt Boeck reported plans for field trips to the Himalaya and Cryo Genie Mines. In April there will be a 2-day field trip to Lost

Valley. He's planning 6 field trips for 2008.

Museum Curator, Garth Bricker, discussed getting ready for the annual Tucson Gem & Mineral Society Show. He's been asked to speak about his 30 years mining the Red Cloud Mine in Arizona. He'll also be displaying his personal Red Cloud Mine wulfenite and collected mining artifacts.

Erich Kern was appointed to serve on the Bylaws Committee.

According to a new law, agendas must be posted 4 days prior to Board of Directors meetings.

Vanessa Jones was appointed Chairman of the San Diego County Fair Committee. The Management of the San Diego County Fair has authorized FGMS and the Volunteers for Minerals to share a booth at the Fair. A draft agreement between the two non-profits regarding the booth's financials was presented to the Board by the Treasurer.

BOWERS MUSEUM FIELD TRIP

On Saturday, March 15th, a field trip is scheduled to the Bowers Museum in Santa Ana. We will be meeting in the parking lot at 9:00 am. Our tour will be at 1:00pm if anyone wants to meet us up there.

Tickets are \$19.00, Seniors \$14.00.

A docent group tour has been arranged exclusively for FGMS at 1:00 pm to view The Michael Scott Collection exhibit, GEMS! Colors of Light and Stone. Mr. Scott is the retired former president of Apple Computer. This collection is touted as the most important private gem

collection in the United States, with few rivals in the world outside of the royal families. Dr. Peter Keller, president of Bowers Museum, a geologist and gemologist who curates the exhibit, has said, "GEMS! Colors of Light and Stone is the most important exhibition of colored gemstones, diamonds and gems as art ever shown in a U.S. museum." The exhibit includes most of the major gem species in every color and variety known, as well as very rare examples of little known color varieties such as green tanzanite and Paraiba tourmalines. It also includes cut collector stones, antique jewelry from the mid-19th to early 20th centuries, and spectacular gem carvings by renowned artists.

The Bowers Museum opens at 10:00 am and closes at 4:00 p.m. Those FGMS members interested in car pooling will meet in the parking lot across from the FGMS building at 9:00 am. Arriving prior to the docent tour will allow members to tour the museum's other exhibits and also have lunch. The Tangata restaurant is located in the museum's courtyard. Cost of admission is \$19.00, \$14.00 (seniors, 62+), with free parking.

Museum etiquette prohibits backpacks, parcels, large bags, umbrellas and briefcases inside the museum. Cameras are not allowed in the exhibit areas and food and beverages are prohibited inside the museum galleries. For further information see the web site, www.bowers.org. The Bowers Museum is located at 2002 North Main Street, Santa Ana, CA, Phone (714)567-3600. To sign up for the tour, please call the FGMS Office at (760)728-1130 and also indicate if you'd be available to drive.

IN MEMORY

Kenneth Van Haitsma, 76, passed away Saturday, February 16, 2008, at home in Fallbrook, CA. He was born September 30, 1931, in Zeeland, MI.

Mr. Van Haitsma earned a MA at Western Michigan.

Moving to California in 1961, he taught elementary school in the Fallbrook school district before moving out of the area. He and his wife returned to Fallbrook in 1987.

In his "retirement," Mr. Van Haitsma commissioned from local artist Tom Mitchell numerous

painted wood sculptures, which he placed in school libraries throughout the area for children to enjoy.

Teachers often used these sculptures as learning opportunities, since they depicted animals like a skunk, toucan, dolphin, leopard and buffalo, as well as reproductions of a six-foot-tall Inuit totem pole, thunderbird and other Native American pieces. Many of these sculptures are still on display.

Mr. Van Haitsma was an avid traveler/explorer and gem/mineral collector who belonged to the Fallbrook Gem & Mineral Society. He donated a vintage coal car to their museum.

He is survived by his wife of 53 years, Norma Jean (Huysler); daughters Mary Lynn Van Haitsma (Roeger), Carlsbad, and Sally Jean van Haitsma (Sutro), Encinitas; brothers Howard Van Haitsma, Pentwater, MI, and Ronald Van Haitsma, Byron Center, MI; and sister Kathy Kronmeyer, Holland, MI.

A private memorial will be held on Sunday, March 2.

(M) Janice Bricker (S)Erich Kern that it be recommended to the membership that the current Bylaws, adopted January 1, 2007 and amended November 8, 2007, be repealed because they were not approved by legal counsel and that the Bylaws of October 12, 2000 and amended October 31, 2002, be adopted. The motion passed unanimously.

With Amendments, 2002

Fallbrook Gem & Mineral Society, Inc.

Bylaws

(Adopted October 12, 2000)

Amended August-October, 2002

ARTICLE I: NAME

Section 1. The name of this organization shall be "The Fallbrook Gem and Mineral Society, Inc." (hereinafter referred to as the "Society").

ARTICLE II: PURPOSES

Section 1. The primary activities of the Society shall be scientific, educational, and research-oriented.

Section 2. The purposes of the Society shall be:

- To promote the study of mineralogy, paleontology, and allied earth sciences.
- To promote the study and practice of the lapidary arts and related crafts.
- To educate its members and members of the general public in the earth sciences and lapidary arts.
- To promote good fellowship.

ARTICLE III: POLICIES

Section 1. The Society is formed as a non-profit organization under section 501(c)(3) the United States Tax Code.

Section 2. None of the assets of the Society shall be used for the pecuniary gain or profit of any individual who is or may become a member thereof.

Section 3. The purposes of the Society shall be developed through meetings, field trips, classes, projects, and public-awareness activities.

Section 4. The Society shall cooperate with other organizations and agencies whose purposes are aligned with those of the Society.

ARTICLE IV: MEMBERSHIP

Section 1. Membership in the Society shall be open to those who are interested in its purpose and who agree to uphold its policies.

Section 2. The following categories of membership in the Society are defined:

- Regular:** A regular member of the Society is an individual who is at least 18 years of age and who pays annual regular member dues. A regular member has full rights and privileges in the Society, including the rights to vote and hold elected office.
- Honorary:** An honorary member of the Society is a regular member who has been exempted from the payment of dues. A motion to grant honorary membership shall be made to and voted upon by the Board of Directors. Should the motion receive two or more negative votes, the grant of honorary membership shall be rejected. An honorary member has full rights and privileges in the Society, including the rights to vote and hold elected office.
- Junior:** A junior member of the Society is one who is 17 years of age or younger and who pays annual junior member dues. A junior member has the rights and privileges of a regular member, excluding the rights to vote and hold elected office. A junior member must be accompanied by his/her parent or sponsor at all meetings and activities of the Society.
- Associate:** An associate member of the Society is one who subscribes to the purpose and policies of the Society and who pays annual associate member dues. An associate member may neither vote nor hold elected office in the Society and may be restricted from certain Society activities. Unless specifically exempted by the Board of Directors, an associate member must reside outside a 50-mile radius from Fallbrook, California.
- Charter:** All members on the Society's records on November 1, 1957, shall be regarded as Charter members.

Section 3. All persons making application for regular or junior membership in the Society shall be sponsored by two regular or honorary members. Persons applying for associate membership need not be sponsored.

Section 4. Each application for membership shall be made, in writing, to the Chairperson of the Membership Committee (or his/her designated alternate) and shall include the sponsors' recommendations, initiation fee, and dues for the year. The Board of Directors shall vote upon each membership application. Should any application receive two or more negative votes, the application shall be rejected. Those approved for membership shall be formally inducted into the Society at the next regular meeting of the Society.

Section 5. Should the conduct or attitude of a member at any time be detrimental to the welfare of the Society, the member shall be expelled by a two-thirds vote of the Board of Directors. Before such action may be taken, a written notice shall be served by the Secretary to the member for him/her to appear before the Board of Directors at a time and place to be designated and to show cause why such action should not be

Fallbrook Gem and Mineral Society, Inc.
Bylaws

October 12, 2000
Page 1 of 4

Sun	Mon	Tue	Wed	Thu	Fri	Sat
		1	2	3	4	5 Board Meeting 10:00 – 12:30
6	7	8	9	10 Beading Brigade 10:00 am – 3:00 pm	11	12 Workshop 9:00 am – 1:00pm Potluck Lunch 1:00 pm
13 Workshop 9:00 am – 1:00pm Potluck Lunch 1:00 pm	14	15	16	17 General Meeting 7:00 pm – 9:00 pm	18	19
20 Avocado Festival 9:00 am to 5:00 pm	21	22	23	24 Beading Brigade 10:00 am – 3:00 pm	25	26
27	28	29	30			

2008

Shogo Yamaguchi, 91

FALLBROOK - Shogo Yamaguchi, 91, left his earthly body, ravaged with Parkinson's disease, at home on the Hughes ranch, Saturday evening, Feb. 2, 2008. He is now in the place of eternal happiness, gardening for the Lord.

He was born on his parents farm in Gresham, Ore., the second of six siblings, four boys and two girls. His parents were Tokuji Yamaguchi and Shina Watanabe, immigrants from Tottori Prefecture on the western coast of Japan. When Shogo was 11 the family went to Japan for a year and lived on his grandfather's farm. They hoped that the change of climate would cure Shogo's asthma and that of his younger brother. But they did not improve, and the family returned to the U.S., eventually buying ten acres to farm in Westminster, Calif. All property was placed in the names of his children because Japanese immigrants were forbidden to become citizens.

Shogo attended the Westminster grammar school and Huntington Beach High School, and worked on the farm, where the family grew a variety of row crops. On weekends he helped sell produce at the Yamaguchi stall in the park at Long Beach. For recreation Shogo grew flowers and gardened and attended local flower shows.

After attending Fullerton junior college, Shogo transferred to UCLA, earning his undergraduate degree in botany in 1939. He was caught in the second Selective Service draft and stationed at Camp Roberts, where he was assigned to maintain the grounds. He spent his spare time collecting seeds of wildflowers in the hills of San Luis Obispo. After Japan attacked Pearl Harbor, Shogo's family was relocated to Poston, on the Mohave Indian Reservation near the Colorado River. Shogo was sent to Fort Leavenworth and later to the Army's Japanese language school in Minn. He served with Admiral Halsey's G2 in the South Pacific where his unit was awarded the bronze star. He ranked sergeant when he was discharged in 1945. He returned to UCLA and earned advanced degrees in botany while working full-time maintaining the greenhouses. He was working on his Ph.D. thesis when he met Elizabeth, who was working on her undergraduate degree in botany.

Shogo and Liz were married in 1953, one year after California repealed its law forbidding inter-racial marriages. The ceremony was held on Valentine's Day at the San Luis Rey Mission when it was still a Franciscan seminary. They raised their children, Nichola, Mathew and Theodore, in Davis, Calif. and Tuskegee, Ala. Shogo taught and did research at UC Davis, where he authored papers on the radiography of plant materials. A professor at Tuskegee Institute, he taught graduate students and undergraduates. He spent free time with his sons in Boy Scouts and was instrumental in developing a section of the Bartram Trail through Tuskegee National Forest. He received the W. Kelly Mosely Environmental Award from the Alabama Extension Service, Auburn.

Shogo retired in 1981 and he and Liz returned to California to the Hughes ranch to care for it so Liz' mother could continue to live there. They made an apartment out of the rock shop/garage that Liz' dad had-used to cut, polish and facet his rocks. And he became active in Fallbrook

After he attended with Liz's mother, Shogo joined the Fallbrook Garden Club and was soon in charge of the identification table. He helped with annual Flower Shows, identifying flowers so they could be part of the competition. He also entered flowers from his own garden, winning awards for Shasta daisies, Cosmos bipinnatus and Tithonia rotundifolia. He shared crop-growing experiences with the Dirty Dozen for 15 years and was a longtime member of the Friends of Santa Margarita River.

In addition to serving on the Board of the Mission Resource Conservation District, Shogo was an early member of the Fallbrook Land Conservancy, researching, identifying, planting and watering. He was honored with the Conservancy's first Gem of a Volunteer award for his leadership in the restoration and revegetation of native plants on the Los Jilgueros Preserve. Faithful members of the Wildflower Team took him with them to work at the Preserve until mid January. A street in De Luz that overlooks the river bears his name.

Getting Minerals ready for sale at FGMS headquarters.



WEST COAST GEM & MINERAL SHOW

Holiday Inn - Costa Mesa ★ Bristol Plaza ★ 3131 S. Bristol St.

COSTA MESA, CA - *the Spring Show*

MAY 16 - 17 - 18, 2008 Show Hours: Fri. & Sat., 10 - 6, Sun. 10 - 5

Top Quality Dealers from around the world!!

Minerals ★ Fossils ★ Gemstones ★ Jewelry ★ Beads ★ Meteorites

Open to the Public ★ FREE Admission ★ Wholesale ★ Retail

So easy to find . . . Less than a mile from John Wayne Airport!

Take the Bristol Street exit (south) from I-405. South of the South Coast Plaza Shopping Center.

Martin Zinn Expositions, L.L.C., P.O. Box 665, Bernalillo, NM 87004

Fax: (505) 867-0073, email: mz0955@aol.com, www.mzexpos.com

for 90 to 100 years and were still in good condition like magazines and a child's doll that Doug Hott retrieved for me.

30 A family and friends portrait of Fallbrook diggers. The iron in the dust never came out of your underwear and wore out of the pores in your hands in about two weeks.

31 The excavator during Waynes occupation dug down at the north end of the dike and came up with uncounted buckets of crushed rock. This is not natural for mining rubble and is the first step in crushing the ore for melting in the smelter. This information is a first for the Red Cloud mine and predates the smelter at Norton's Landing on the Colorado River and could only have been discovered by excavating the dike area. Thanks Wayne.

32 Dave and Mike Shannon going in after I dug out the 1990 poster wulfenite and the other wulfenites on quartz that are down stairs. There was nothing left.

33 Copper minerals are almost nonexistent at the Red Cloud. I just didn't see any but two times in my approximately 35 years at the Red Cloud. George Godas found a small area of copper minerals and I found two small areas. My last one was exposed by the excavator near the north end near where the entrance used to be. There was fornacite, celestine, chlorargyrite and the caledonite was being replaced by diaboite as a pseudomorph. This was very unusual. This occurred to me only once before at the Rowley mine and never to my knowledge anywhere else. The Smithsonian checked it out from

the Rowley and gave it their blessing. The Red Cloud find added wulfenite crystals with it. Maybe it will happen again now that the Rowley miners are entering the same area. This is a first for the Red Cloud and known only to George and myself until now.

34 This is called the feather after the Indians that lived in the area when the mine was first worked. There are other wulfenite matrix pieces all from the same spot that Dave Shannon tried to find more but didn't. At that time Dave said that he always found better material than the person just before him.

35 A diggers paradise.

ANNOUNCEMENTS

NEW MEMBER

Charles H. Schultz
43933 Northgate Ave.
Temecula, CA 92592
(951)-676-7013

RUMMAGE SALE:

March 29th will be another rummage sale. Please save your stuff and bring to the museum Tues. through Fri. of that week. PLEASE bring your things clean, no broken items. Bring clean donations to the museum anytime after 10:00 AM Tuesday March 25th. Thank you!

DUES

Dues are due by March 1st, Single \$25.00 and couple \$45.00, child \$6.00.

VOLUNTEERS FOR MINERALS

A big "Thank You!" to the Volunteers for Minerals for their recent mineral and fossil donations. We've been busy getting them ready for sale as you can see from the picture.

REFERRALS WANTED!

Attention FGMS members in the trade! Do you provide services to the public such as faceting, appraisals, lapidary, make or repair jewelry or teach classes? If you're interested in receiving referrals, the Museum Gift Shop is compiling a list to assist visitors who come in with these inquiries. We would like to refer the public to FGMS members, but only with your permission. Please contact Elizabeth Cheatham at (760)731-0436 or ejcheatham@aol.com with your business

endeavors, contact information and business hours.

ADVERTISE!!

Are you "in the trade"? Do you know that the Lithosphere is sent across the entire U.S. and is read by multitudes? Expose your business to these readers by advertising! The readership really doesn't know what you do until you advertise, so here's a great opportunity to reach new customers. Whether you submit your business card or a special event ad, the Lithosphere will get the word out! See the inside front page for the Lithosphere's very reasonable rates. Contact the Vanessa Jones for more information at (760) 728-2339

or sdvanjones@aol.com.

BUILDING FUND PROGRESS REPORT

It was decided at the last board meeting to pay down the mortgage by \$50,000 so make sure to check out the thermometer at the next club meeting to see how much closer we're getting to our goal.

VOLUNTEER HOURS FOR FEBRUARY = 353

FGMS 2008 BUDGET

INCOME		EXPENSES (CONT.)	
Amazon.com	40.00	CD Interest Reinvestment	0.00
Donations - Bldg Fund/Tour	4,000.00	Donations to Others/Dues	400.00
Donations - Collection Fund	2,000.00	Event Exp - Avocado	0.00
Donations - Misc.	1,000.00	Event Exp - Gala	0.00
Dues - Renewals	2,000.00	Event Exp - Fall Fest	3,000.00
Dues - New Members	1,000.00	Event Exp - Other	1,500.00
Events - Avocado	3,000.00	Event Exp - Silent Auction	0.00
Events - Fall Fest	15,000.00	Fundraising Exp	800.00
Events - Gala	0.00	Grant Exp	10,000.00
Events - Other	250.00	Legal Exp - ADA Compliance	2,000.00
Events - Rummage Sale	1,000.00	Legal Exp - Threat of Litigation	5,000.00
Events - Silent Auctions	2,000.00	Prof. Fees - Accounting	1,500.00
Events - SD Fair	10,000.00	Membership - Badges	200.00
Grants	10,000.00	Membership - Directory	200.00
Interest	2,500.00	Membership - Lithosphere Print	1,200.00
Memorials	0.00	Membership - Lithosphere Post	500.00
Mineral Sales	1,000.00	Membership - Speaker	700.00
Monthly Raffle	700.00	Membership - Insurance	1,200.00
Other Income	60.00	Memorial Expense	0.00
Store Sales	15,000.00	Museum Displays/Supplies	500.00
Rental Income - Auditorium	3,500.00	Museum Relocation	0.00
Rental Income - Ste A	6,000.00	Store Purchases	7,500.00
Scholarship Donations	100.00	Store COGS	0.00
Totals	80,150.00	Parking Lot Trust Fees	500.00
EXPENSES		Rental Expense	0.00
Alvarado - Furniture/Computer	600.00	Rocky Crest	0.00
Alvarado - Insurance	4,500.00	Scholarship/Education	1,000.00
Alvarado - Maintenance	2,000.00	Storage	3,000.00
Alvarado - Mortgage	20,000.00	Taxes - Sales Tax	0.00
Alvarado - Office Supplies	1,500.00	Taxes - Property	1,000.00
Alvarado - Postage	350.00	Taxes - Federal	400.00
Alvarado - Security	350.00	Taxes - State	215.00
Alvarado - Utilities	6,200.00	Totals	79,615.00
Bank Fees	1,500.00		
Computer Exp	300.00	Total Profit (Loss)	535.00