

# Lithosphere

Volume XVII, Number 6

Fallbrook, California



*Homemade knitted doll found in the 1881 upper part of the Red Cloud Mine*



Fallbrook Gem and Mineral Society, Inc.

June

2008

**Fallbrook Gem and Mineral Society, Inc.**  
 123 W. Alvarado Street Suite B, Fallbrook, CA 92028  
 760-728-1130 www.fgms.org Email: fgms@sbcglobal.net

President	Gina Palculich	(760) 728-2196
Vice President	Mary Fong/Walker	(760) 723-3484
Secretary/Office	Liz Yamaguchi	(760) 728-7233
Treasurer/Director of Finance	Vanessa Jones	(760) 728-2339
Director of Facilities	Erich Kern	(951) 698-7950
Director of New Facilities	Don Parsley	(951) 600-4890
Director of Public Programs	Bill Hollingsworth	(760) 726-5878
Director of Education	Elizabeth Cheatham	(760) 731-0436
Director of Member Services	Janice Bricker	(760)-728-1333

**FGMS Museum**

Museum Curator	Garth Bricker	(760) 728-1333
Assistant Curator	Mike Evans	(760)-414-9722
Gift Shop	Elizabeth Cheatham	(760) 731-0436

**Lithosphere Editor and Webmaster**

Patricia Hartman 760-723-6624

**Calif. Federation Representative**

Gina Palculich 760-728-2196

**Fund Raising**

Board of Directors

**Volunteers for Minerals Representative**

Garth Bricker (760) 728-1333

**Membership/Refreshments**

Janice Bricker 760-728-1333

**Publicity**

Diane Rose 760-723-1086

**Programs**

Mike Evans 760-414-9722

**Scholarship**

Bill Rupp 760-723-6624

**Field Trips**

Matt Boeck 760-216-8971

**Historian**

To be determined

Display Advertising rates for the *Lithosphere* a publication of the Fallbrook Gem and Mineral Society:

Full page, 7"x4.5" = \$120.00 for 10 months, or \$14.00 per issue.  
 Half-page, horizontal 3.5"x4.5" = \$60.00 for 10 months, or \$7.00 per issue  
 Half-page, vertical 2.25"x7" = \$60 for 10 months, or \$7.00 per issue.  
 Quarter-page horizontal 3.5"x2.25" = \$30 for 10 months, or \$3.50 per issue.  
 Eighth-page horizontal 1.25"x4.5" = \$15 for 10 months, or \$1.75 per issue.  
 All display advertising must be paid for in advance. All

advertising in the *Lithosphere* must be related to the educational focus of the Fallbrook Gem and Mineral Society and its publication the *Lithosphere*.

Deadline for all advertising is the 15th of the month preceding the month of publication. The *Lithosphere* publishes monthly during the 10 month period between September and June. Classified advertising is free and is limited to text only. Classified ads will be placed on the classified ad page and run until notification is received from advertiser to cancel ad, or at the editor's discretion based on space available. Editor reserves the right to edit all classified ads to fit the space available. Cover photo from 2007 Calendar of Fine Agates & Jaspers. Guest photo from palagems.com.

**Inside the Lithosphere**

June Program	3
Board Summary	3
Field Trip	4
Garth's World	6
Articles	10
Announcements	4
Calendars	12
Legal Information	15

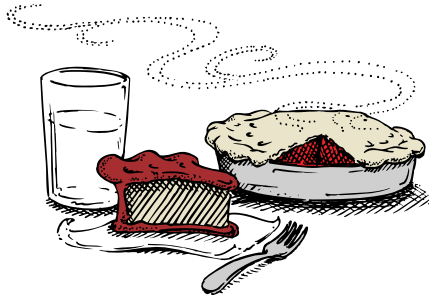
Contact the editor Patricia Hartman for more information at 760-723-6624 or email to gems@hitekdesigns.com. Or write to the editor at PO Box 1390, Bonsall, CA 92003. Cover Photo and others from Garth Bricker.

**FGMS JUNE 12TH  
MEETING AT 7:00PM**

## **PIE NIGHT!!!**

### **and Silent Auction**

**BRING A PIE AND SHARE**



#### **SUMMARY OF BOARD MINUTES MAY 3, 2008 FGMS BOARD OF DIRECTORS MEETING**

The Board of Directors minutes of April 5, 2008 were reviewed and approved.

Vanessa reported that the tax returns have been turned-in to Mr. Levering. The Avocado Festival brought in \$4,268.27. Vanessa will write a report on the Avocado Fest, to include set-up and participants to be used for future reference. A complete copy of the Strategic Plan was handed out at this month's meeting to be discussed next month. Gina presented a package from Art in the Parks 2008, with photos and samples of the children's work for future reference and documentation on the club's involvement.

Bill was presented a list of Societies we are members of to update. Bill asked that all members look at the calendar for changes, corrections and updates. BJ passed out a 3-page Calendar to be reviewed by Board Members. Initial changes were noted. It was recommended that this Calendar be given to Janice who now does the monthly calendar. Members need to be reminded that activities/work partys still continue through the summer months, even though meetings are not held. Bill was given the Master Plan of the SLR River Park, to review if there are benefits for the club in participating and will report back next month. BJ stated she was still making calls for new docents. She is also compiling a mini reference guide to items in the museum for the docents to use. Garth is still contacting schools for the children's program. Bonnie Parsley has a wire wrap class on May 17. Bill Rupp was present and gave a report on the status of the Scholarship Committee. Don Parsley discussed the lot improvements and the status of the eucalyptus tree removal. David Mitchell is in the process of writing a grant to the Legacy foundation for monies to be used for handicapped facilities/access for the

lot. (M) BJ Cheatham made a resolution that the FGMS apply for the full amount of the grant vs. partial grant money for the year 2009. (S) Don Parsley, motion approved unanimously. Garth Bricker stated that two classes had visited the museum. All correspondence was reviewed and will be answered by Board Members.

A group of adults with disabilities will be volunteering to make grab bags. Gina Palculich will attend this year's CFMS meeting in Ventura. Bill Hollingsworth discussed the possibility of field trips to his mines. The information will be given to Matt. Bill is still working on the bylaws and requested job descriptions from all office personnel. Garth suggested we could keep a camera in the museum to take photos of visitors. Ask members for camera donation(s) at the next regular meeting.



#### **SAN DIEGO FAIR BOOTH "WISH LIST"**

As we're busy getting everything ready for the San Diego County Fair (June 14 - July 6), there are a few things that we still need to make the booth perfect. We're asking if any member has these items and would be willing to loan them for use in the booth for the duration of the Fair:

2 tall director's chairs

Tower fan with remote control

If you can help out, please contact BJ Cheatham at (760) 731-0436 or [ejcheatham@aol.com](mailto:ejcheatham@aol.com) by June 1st. Thanks for your support!



#### **FIELD TRIP - JULY 19, 2008**

Western Center for  
Archaeology & Paleontology  
Hemet, CA

A field trip is scheduled for Saturday, July 19, 2008, to the Western Center, located in Hemet, CA. The Western Center is a regional museum, education, research and curation center for the archaeological and paleontological collections recovered during the construction of Diamond Valley Lake in the San Jacinto Valley. Opened in Oct. 2006, the Western Center is a 33,000 square foot structure that houses \$4 million dollars worth of Ice Age mammals and archaeological exhibits, most significantly "Max", the largest mastodon discovered in the western United States, "Xena", a 10,000-year-old mammoth and "Little Stevie", a giant ground sloth, that stands nearly 7 feet tall. Alcoves dedicated to the archaeological finds showcase Native American artifacts and the Early Settlers of the region. A 270 degree

Immersion Theater captures the viewer with a short film that transports you to a time when giant creatures roamed the landscape. Nearly 1,000,000 specimens were discovered during the development of Diamond Valley Lake (1993-2001). You will see their discovery in the field to removal to safe storage for curation and study and display in the museum.

FGMS members who want to carpool and leave from Fallbrook will meet in the parking lot across from the FGMS Building at 8:30 a.m. Others who wish to travel from other places should arrive at the Western Center at 10:00 a.m. The most direct route from Fallbrook/Temecula/Murrieta is the I-15 North to the I-215 North, Newport Road exit (turn right), Domenigoni Parkway (10 miles), Searl Parkway (turn right) to The Western Center at 2345 Searl Parkway. The museum's phone number is (951) 791-0033.

Cost is \$8.00 adults, \$6.50 for seniors. There are no restaurant facilities in the immediate area, however there is a nice picnic area so everyone is encouraged to pack a lunch to enjoy after the museum tour. There is a wonderful gift shop, The Mastodon Trading Company which carries an impressive array of unique art, educational items, clothing, toys and more!

For more information, see the website, [www.westerncentermuseum.org](http://www.westerncentermuseum.org) or call Gina Palculich at the FGMS Office (760) 728-1130.

## POTLUCK

### & MINERAL SALE

**SATURDAY, AUGUST 16, 2008**

FGMS's annual summer "Potluck & Mineral Sale" will take place on Saturday, August 16, 2008, from 11:30 a.m. to 4:00 p.m.

The event will begin with the Potluck starting at 11:30 a.m. Everyone is asked to bring food to share that will serve 6-8 people.

FGMS has extended an invitation to last year's guests, the Mineralogical Society of Southern California (MSSC), and for the first time, our friends from the Palomar Gem & Mineral Society in Escondido and San Diego Mineral and Gem are also invited to join us for a day of fun, fellowship and great mineral deals!

The Mineral Sale will commence at 1:00 p.m. This is a wonderful opportunity for members to sell excess minerals...and purchase new and exciting specimens with the proceeds! Each seller will be allocated 1/2 of an 8 foot table and will be asked to donate 10% of their total sales to FGMS. The Mineral Sale will end at 4:00 p.m.

Put the date on your calendar now...and start looking through your collection for items you'd like to sell. Come and join us for a day of good food, fun, fellowship, and deals, deals, deals!

If you have any questions, please call the FGMS Office at (760) 728-1130. Please, do not bring your pets.

## GARTH'S WORLD

### Garth Bricker, FGMS Member and Museum Curator June 2008



I liked the Tucson 2008 mineral show in February as it brought many famous mines and their minerals to the show for the first time all in one place and probably not to be done again in my life time.

Somewhere I heard that the minerals of Arizona would be gathered at Tucson in 2012. This is great for me so I can show my Red Cloud wulfenites once again. I feel that the Red Cloud wulfenite was not only Arizona's premier mineral but the United States' premier mineral. It is easy for me to be swayed in this direction since I've worked at the Red Cloud for 30 years or more collecting wulfenites for 2000 hours underground and hiking around the hills looking for more mines and minerals. Going to all the mines in the area and going down into them gave me a lot of knowledge of the mining that went on since 1881.

The official book for the 2008 Tucson show, AMERICAN MINERAL TREASURERS gave the Sweet Home mine and rhodochrosite 10 pages of text and pictures. The Red Cloud got 8 pages like most of the other US mines and with some full pages of wulfenites but not as

many full pages as the rhodochrosite section.

The Mineralogical Record Magazine came out after Tucson with a series of pages showing the minerals of many of the mines. There was a rhodochrosite page showing fairly small crystals because many of the clusters were pretty big themselves. The Red Cloud mine had two pages and the minerals were very bright and bigger looking. These two pages stood out compared to the rest of the single pages showing Tucson's US minerals. The wulfenites stole this magazine's show. I approve of this.

Sadly, I didn't get to put in a wulfenite in the featured display for the Red Cloud. But the Tucson show goes all got to see a case of wulfenites with a lot of individual character like the one that was the poster mineral for the 1990 show where Caroline O'Bagy Davis printed hundreds for the show. She liked the poster and said it was



Felt hat found a foot down in the 1880's backfill before the excavator took the dike to 30-50 feet.

the only poster mineral she printed over the years that was a self-collected mineral. She wrote me a letter after the show telling me that it was the best selling poster to that time beating the famous tourmaline poster.

Most of my wulfenites that I display are unique and are one of a kind. Also on display at Tucson was the 1881 ore bag made of rawhide and sewn up with strips of rawhide. This was used to load the high-grade ore to carry it up the ladders to the surface. The bag is over 1 ½ ft. long and must have weighed a ton to carry up 500 feet to the surface. A rat chewed on the front of the bag to add character. It came from a shaft between the north side entrance to the Red Cloud and the town of Silent. At that time the town was just a few walls still standing. For some unknown reason someone came with a bulldozer and leveled the area where the saloon and store stood.

I was digging in the back fill along the dike one day and came to some 1881 antiques about foot down. The first was a felt hat that had what looked like pinking shears had trimmed the lower part of the hat. There were some nibbles on the surface of the felt where some bug sampled it but didn't like the taste. Thank you bug. Next came several miner made candle holders that would hook to a rock to hold the candle so the miner had both hands to hold the gad and hit it also. One candleholder was just a long length of wire twisted over an object just a little bigger than a candle so a candle would slip down into the spiral of wire and stay put on the wall.

Go outside on a moonless night and see how much you can see with just a candle and try hitting the back end of the gad over

and over just like being in a completely dark mine tunnel. The last of these finds were 1881 candles that looked like 1881 candles, all etched and pitted. These candles are like the ones that let President Lincoln read at night. There are no pictures showing Lincoln needing glasses to read by.

Another find came some years later after I and many miners and rock hounds had walked over the main hauling tunnel at 300 ft. down in the mine. It went from the south end of the mine to the north end. There was a rectangular rock?? on this pathway. I try not to let rectangular looking rocks just lie there and not get picked up. Rocks don't come with square angles so they must be picked up.

This square rock covered with gray dust and rat droppings when opened up was pristine inside telling me about the French exposition of 1900 and go to see it. (IN FRANCE). This fold over held roll your own cigar ette papers to make your own cigarettes just like in the cowboy



Wheat straw bag find.

movies. There was even a little cloth pouch with a drawstring to hold the tobacco. This Red Cloud mine was a bonanza of things to collect besides wulfenite.

I forgot the 1881 bandana found with the other backfill things like the old felt hat. My wife, a quilter, could tell the pattern on the bandana was made of cloth typical of the 1880's. None of these things just rotted away because of the extreme dryness of the Red Cloud desert air. I never did find a dried out man like the one pictured in Pete Bancroft's book, GEM AND CRYSTAL TREASURERS, page 8.

In 1997 Wayne Thompson's diggers, myself included, with the aid of the huge excavator had gone down many tens of feet on the dike digging into the old tunnels looking to break into wulfenite pockets. We found old magazines and newspapers and other bits of history plus old tools rusting away. These old tunnels were made near the beginning of mining and were closer to the surface than the work nearer the end of mining two years later around 1883 or 1884. One day Doug Hott, the caretaker, was looking into the old drifts and came up with a hand made knitted doll. Just like archaeologists at an ancient site would do, we said there must have been children at the mine around 1881 and there must have been mothers and families of the miners living there. This one child losing her doll says that the children were probably out roaming in the mine and this one girl had her doll with her and put it down somewhere in one of the drifts and forgot about it. Over one hundred years later it was found and sits in a museum. New facts just came out in the AMERICAN MINERAL

TREASURES book and when I get permission to use the new data I will add another page to the tale of the Red Cloud mine, maybe the most famous mine in the US.

## ONLY 6 WEEKS UNTIL THE FAIR OPENS!!!

Don't miss out on all the fun of creating beautiful jewelry that we'll sell at the Fair ... to help pay off our mortgage!

We meet tomorrow (May 8th) from 10 am to 2 pm. Usually we stay until 4 pm, but another group is renting our meeting room from 3-5:30 pm.

We'll meet every Thursday until the Fair....so put the dates on your calendar.

May 15  
May 22  
May 29  
June 5  
June 12

## Come & join "The Beading Brigade"!

*BJ Cheatham*  
(760) 731-0436

## New Members

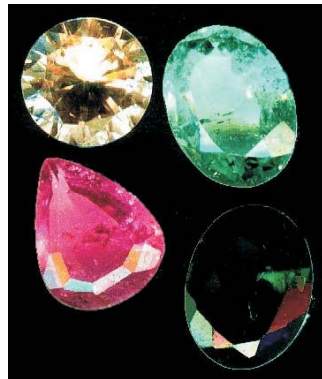
Richard Shields  
16752 Meandro Court  
San Diego, CA 92128  
805/452-9091  
shields6@ix.netcom.com

Janice & Eugene Gonzales  
1726 E. Fallbrook St.  
Fallbrook, CA 92028  
760/731-9212

Laurie & Keith Huber  
3602 Olive Hill Rd.  
Fallbrook, CA 92028  
760/451-1821  
pondpeople@roadrunner.com

## DON'T FORGET PIE AND SILENT AUCTION NIGHT

At the general meeting on June 12th at 7pm.



## THE COPPER COUNTRY MINERAL RETREAT

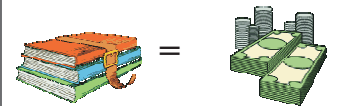
August 3-10, 2008 in Houghton, MI  
The Copper Country Mineral Retreat offers a week of mineral collecting plus more! Check out our website: [www.museum.mtu.edu/copper\\_count\\_ry\\_mineral/index.html](http://www.museum.mtu.edu/copper_count_ry_mineral/index.html) or contact the A.E. Seaman Mineral Museum by email [ccmr@mtu.edu](mailto:ccmr@mtu.edu) or by phone 906-487-2572

Thanks for any information you can provide.

Darlene Comfort  
Museum Manager  
A.E. Seaman Mineral Museum  
Michigan Tech, Houghton, MI  
906-487-2572

## AMAZON.COM & FGMS

Support FGMS every time you place an online order with Amazon.com! FGMS is an "Amazon Associate" and when you link to "Amazon.com" through our website, [www.FGMS.org](http://www.FGMS.org), and purchase something, FGMS receives a commission ... instant contributions with every book or CD you add to your collection, at no additional cost to you! Just click on the "Store" tab (at the top of the [FGMS.org](http://FGMS.org) home page) to get to Amazon.com. Order often and order lots!



## HOWLITE



Howlite, which is named for its discoverer Henry How, a Nova Scotia geologist, is one of those minerals that is

more famous for imitating another mineral. In this case the other mineral is turquoise, a phosphate gemstone. Although howlite is always white or gray, it can accept dyes fairly easily and be dyed a turquoise blue. The look of turquoise is so good that dishonest dealers have been unfortunately successful at this hoax.

In more honest circumstances, dyed howlite is an affordable substitute for turquoise carvings, beads, polished stones and cabochons. It accepts a nice polish and its porcelaneous luster is attractive and enhances even undyed beads and carvings. Unfortunately it has low hardness, but it still has a distinct toughness. California is the source for almost all of the howlite trade where nodules of up to one hundred

## West Coast Fall GEM & MINERAL SHOW

HOLIDAY INN - Costa Mesa

Bristol Plaza ★ 3131 S. Bristol St. ★ COSTA MESA, CA

**NOV. 14 -15 -16, 2008** Show Hours: Fri. & Sat., 10 - 6, Sun. 10 - 5

70 Top Quality Dealers ★ Fabulous Holiday Shopping!!

Minerals ★ Fossils ★ Gemstones ★ Jewelry ★ Beads ★ Meteorites

**Open to the Public ★ FREE Admission ★ Wholesale ★ Retail**

So easy to find . . . Less than a mile from John Wayne Airport!

Take the Bristol Street exit (south) from I-405. South of the South Coast Plaza Shopping Center.

Martin Zinn Expositions, L.L.C., P.O. Box 665, Bernalillo, NM 87004  
Fax: (505) 867-0073, email: [mz0955@aol.com](mailto:mz0955@aol.com), [www.mzexp.com](http://www.mzexp.com)

pounds have been found. Howlite is found in continental evaporite deposits with other borate and evaporite minerals. It forms in nodules that appear like the heads of cauliflower, crystals faces on the nodules are rare.

Veins of black weblike streaks often are interlaced throughout the nodules, adding to their character. Slabs of howlite are often painted with scenes and designs that make artistic use of these veins. Datolite and bakerite a couple of other borosilicates, form similar looking nodules, but are distinctively harder. Massive magnesite can also be confused with howlite, but it has good cleavage.

Howlite as is listed above, is often a confusing mineral to classify. The silicon atom in its formula would normally require its classification as a silicate mineral. But some classification schemes prefer to place howlite with other borate minerals in the carbonates class because it has five borons to only one silicon and that its character and formation are more in line with other borate minerals such as colemanite, ulexite, borax and kernite.

#### PHYSICAL CHARACTERISTICS:

- Color is white with gray to black streaks, web-like markings and blotches.
- Luster is dull to subvitreous (porcelaneous) and earthy.
- Transparency crystals are opaque to translucent.
- Crystal System is monoclinic; 2/m • Crystal Habits include cauliflower-like nodules and compact sometimes micaceous masses. Crystals are rare, but minute (1mm size) tabular six sided crystals sometimes aggregated into

rosettes are found and some nodules will have crystal faces on their surfaces (mostly from Nova Scotia). • • Cleavage is absent.

- Fracture is conchoidal to uneven.
- Hardness is 3.5 • Specific Gravity is approximately 2.5 - 2.6 (slightly below average) • Streak is white.

• Other Characteristics: Sometimes fluoresces a blue, yellowish white or off white color under shortwave UV light and dissolves in hydrochloric acid solution without bubbling.

• Associated Minerals include colemanite, ulexite, anhydrite, gypsum, colemanite and clays.

• Notable Occurrences include Latonville Quarry, Brookville, Windsor (the type locality) and Iona, Nova Scotia; Newfoundland and New Brunswick, Canada; Sterling Borax Mine, Tick Canyon and Lang, Los Angeles County; Gower Gulch, Inyo County and Daggett, San Bernardino County and other borate deposits in California, USA.

• Best Field Indicators are nodular character, color, solubility in HCl, luster, lack of cleavage and softness.

*From the Rockorder  
Vista Gem & Mineral  
Society, P.O. Box 1641,  
Vista, CA 92085*

		June						2008
		Sun	Mon	Tue	Wed	Thu	Fri	
	1	2	3	4	5	6	7	
	8	9	10	11	12	13	14	
	15	16	17	18	19	20	21	
	22	23	24	25	26	27	28	
	29	30						

# July

Sun	Mon	Tue	Wed	Thu	Fri	Sat
		1 Fair Info Booth 10 am - 6 pm	2 Beading Brigade 10 am - 4 pm	3 Beading Brigade 10 am - 4 pm	4	5 Board Meeting 10 am - 12:30 pm
6 Fair Closes Booth tear down starts (10pm)	7 Fair Booth Tear down Fair Exhibits Pick up Noon - 7 pm	8	9 NO FGMS MEETING	10 NO FGMS MEETING	11 Hot Summer Nights "Roads & Relics" 5-8pm	12 Work Party 9:30 am - 1 pm Potluck 1 pm
13 Work Party 9:30 am - 1 pm Potluck 1 pm	14	15	16	17 Beading Brigade 10 am - 4 pm	18	19 Field Trip Western Center meet 8:30 am (FGMS parking lot) Tour 10 am
20	21	22	23	24	25 Hot Summer Nights "Taste of Fallbrook" 5-8 pm	26
27	28	29	30	31		

2008

# August

Sunday	Monday	Tuesday	Wednesday	Thursday	Friday	Saturday
					1	2 Board Meeting 10 am - 12:30 pm
3	4	5	6 Beading Brigade 10 am - 4 pm	7 Beading Brigade 10 am - 4 pm	8 Hot Summer Nights "Off Road & Military" 5 - 8 pm	9 Work Party 9:30 am - 1 pm Pot Luck 1pm
10 Work Party 9:30 am - 1 pm Pot Luck 1pm	11	12	13 NO FGMS MEETING	14 NO FGMS MEETING	15	16 Potluck & Mineral Sale 11:30 am-4 pm Lithosphere (submissions due)
17	18	19	20 Beading Brigade 10 am - 4 pm	21 Beading Brigade 10 am - 4 pm	22	23
24	26	27	28	29 Hot Summer Nights "Chili Contest" 5 - 8 pm	30	31

2008

## Legal Information

The Fallbrook Gem and Mineral Society is a §501(c)(3), non-profit, educational and recreational organization dedicated to promote the study of mineralogy and allied earth sciences; to study and practice the art of lapidary; and to promote good fellowship.

Regular meetings are held at 7:00 pm on the second Thursday of each month, except February (generally the third Thursday) and July and August (no meetings), at 123 W. Alvarado St. The public is invited to attend our museum located at 123 W. Alvarado. The museum is open Thurs., Fri., and Sat. 11am to 3pm and during special events in the downtown area or by appointment. Annual dues are \$25 for adults, \$20 for each additional adult in the same household; \$6 per child to age 17. The initiation fee is \$6 per person. Membership fees must be submitted along with an application, obtainable from the Society or its web site.

Copyright © 2003 by the Fallbrook Gem and Mineral Society, Inc. Except for items that are specifically copyrighted by their authors, other societies may use material published in **Lithosphere** provided proper credit is given and the sense or meaning of the material is not changed.

**Lithosphere** is published monthly (except July and August) and is sent to all members of the Fallbrook Gem and Mineral Society as part of their membership.

**Exchanges:** Free reciprocal exchanges for the bulletins of other gem and mineral societies are welcomed. **Please send all exchange bulletins to the FGMS Office.**

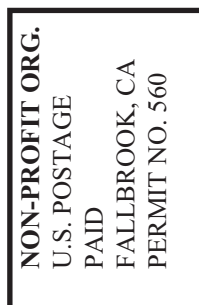
**Disclaimer:** The opinions and conclusions expressed in **Lithosphere** are those of the authors and do not necessarily represent those of the Officers, Editor, or members of the Society.

**Contributions:** Submissions (articles, letters, notes, announcements, photographs, etc.) are **actively** solicited from FGMS members. Submissions from non-members may be included at the discretion of the Editor. Copyrighted material submitted for publication must be accompanied with a written release from the copyright holder. Original, personally-written articles will be published with a copyright notice in the author's name **if requested**; otherwise all submissions will be published without individual copyright. No anonymous submissions will be considered; however, the submitter's name may be withheld, or a pseudonym used, upon request. All material is subject to editing. Unless previously arranged, all submissions become the property of the Fallbrook Gem and Mineral Society. Send all submissions to the Editors.

**Deadline:** The deadline for all submitted material is the 20th of the month prior to publication. Allow extra time if line drawings or photographs are submitted. **Editor: Patricia Hartman**, PO Box 1390, Bonsall, CA 92003. Email address: [patricia@hitekdesigns.com](mailto:patricia@hitekdesigns.com)

**Lithosphere Staff:** Garth Bricker. Website: <http://www.fgms.org/>—Webmaster Patricia Hartman: [Webmaster@fgms.org](mailto:Webmaster@fgms.org)

**Affiliations:** California Federation of Mineralogical Societies and the American Federation of Mineralogical Societies.



*Lithosphere*  
**Fallbrook Gem and Mineral Society**  
Patricia Hartman Editor  
**123 W. Alvarado St. Suite B**  
Fallbrook, CA 92028  
**RETURN SERVICE REQUESTED**